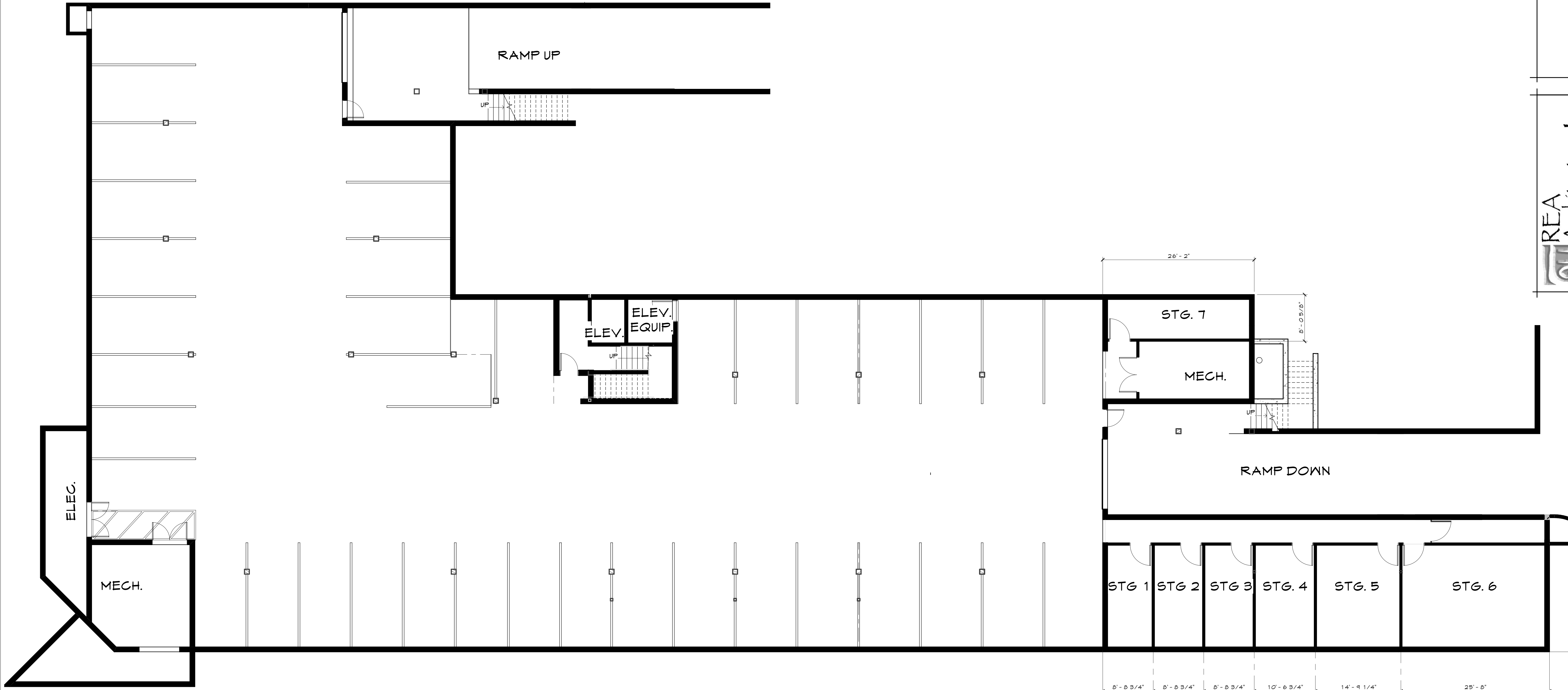


PLOT DATE - 10/26/2006 3:42:49 PM



1 PARKING LEVEL
1/8" = 1'-0"

REA
Architecture Inc.
P.O. Box 71652
2468 E. Fort Union Blvd. #106D
Salt Lake City, Utah 84171
(801) 944-9388 Fax (801) 944-9387
E-mail: reaar@architecture.com

BUILDING 6443
6443 NORTH BUSINESS PARK LOOP ROAD
PARK CITY, UTAH
Project No. -

Date	25 SEP 2006
Revisions	
No.	Date
Drawing No.	